

MELO LIFT *Zoom Boom*



ML8044

- 8,000 lb. capacity
- 44 ft. lifting height

SUPERIOR VERSATILITY

MELO LIFT Model ML 8044

DIMENSIONS

Wheelbase	120"	304 cm
Overall width	101"	256 cm
Overall height	94"	238 cm
Length less forks	241"	612 cm
Ground clearance	19"	48 cm
Total weight (approx.)	24,200 lb..	11,000 kg
Turn Radius	141"	357 cm
Frame level	+/- 11 Degrees	

SPECIFICATIONS

Engine	Cummins, 4BT3.9, turbocharged diesel, 110 horsepower @ 2500 rpm
Transmission	Electronic powershift, 4 speed forward and 2 speed reverse Speed range - 3.7-22 mph 6-35 km/h
Axles	Steerable outboard planetary
Brakes	Service - Differential mounted wet disc brakes- both axles Parking - Differential mounted S.A.H.R. wet disc
Tire	14.00 x 24 - 12 ply GOODYEAR tubeless
Steering	2 wheel, 4 wheel, crab
Boom	3 section, welded construction Maximum lift height- 44' 0" - 1341 cm Maximum forward reach - 30' 0" at 24" LC Dual shaft type carriage Carriage rollback - 22 degrees Carriage forward tilt - 79 degrees
Forks	2 1/4" x 4" x 48" 5.7 cm x 10.2 cm x 122 cm
General	Fuel/hydraulic oil tank - 41 US gal - 155L Hydraulic pump - 34 gpm @ governed rpm Variable displacement, load sense, priority system 12 volt - 62 amp. alternator

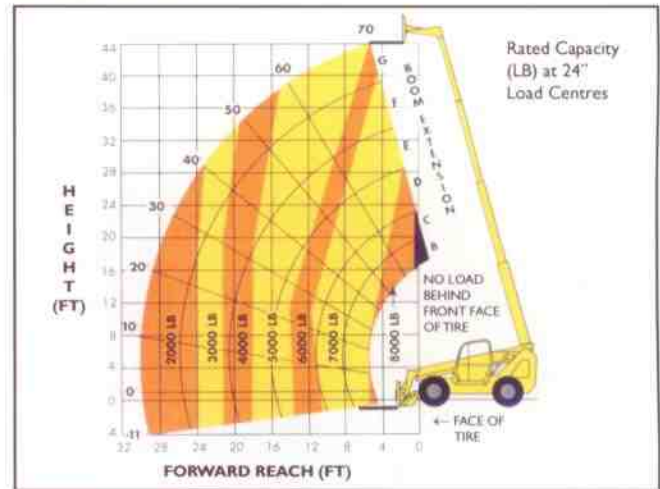
STANDARD EQUIPMENT

- Pilot-operated joystick boom & frame level controls
- Gauge instrumentation
- Hydraulic frame leveling
- Load capacity chart
- Automatic self-leveling forks
- 4 wheel drive
- Front axle mounted differential lock
- Engine block heater
- Quick disconnect carriage
- ROPS/FOPS operator compartment
- Lockable fuel cap/engine compartment
- Service and park brake activated transmission disconnect
- Anti-restart keyed ignition switch with neutral start
- Tilt adjustment of consol mounted joystick controls
- Hydraulic tank mounted sight level and temperature gauge
- Swing up engine doors
- Rubber isolated cab mount
- Right-hand arm rest
- Adjustable suspension seat
- Anti-freeze
- Retractable seat belt
- Electric horn
- Anti-skid floor and steps
- Reverse warning alarm
- Yellow paint with black trim
- Overcentre lock valves on all hydraulic functions
- Foot throttle
- External rear view mirrors
- Two stage air cleaner
- 4 wheel power steering
- Rear axle "stable-lock" cylinder
- Automatically activated S.A.H.R. parking brake
- Operator selectable, brake activated, automatic transmission disconnect system
- Tank mounted return filter
- Tank mounted hydraulic sump pickup filter

OPTIONAL EQUIPMENT

- Various carriage/fork sizes
- Turn signals/lights
- Working lights
- Flashing beacon
- Hydraulic fork positioning
- Auxiliary hydraulics
- Enclosed operator cab
- Tilt steering wheel
- Rotate carriage
- Dual batteries
- Material bucket
- Winch
- Jib boom
- Foam filled tires
- Vandalism cover
- Outriggers

CAPACITY CHART



- Machine design complies with ASME/ANSI B56.6 stability requirements for rough terrain forklifts.
- For attachments consult factory for load rating.
- Read boom angle and boom extension, then determine allowable load from chart.
- Figures shown are stacking capacity with truck level on a firm surface and with properly inflated tires.
- Do not exceed rated loads as dangerous and unstable machine conditions will result.

IMPORTANT

- All capacities rated on firm ground, with the machine steered straight and frame level.
- Always travel with boom retracted in the lowest possible position.
- Never position fork carriage behind front face of tire.

Note: Materials and specifications are subject to change without notice.

MELO LIFT

Zoom Boom

DEMELO'S CONSTRUCTION EQUIPMENT LTD.

580 Fenmar Drive, Toronto Ontario M9L 2S4

Tel: (416) 740 - 3997 * Fax: (416) 740 - 5530

Email: info@melolift.com * Website: www.melolift.com